

PRIMARILY for U.S.*

GRADES 2-3

* Understanding Science

Volume 24 Issue 3 2000 - 2001 Fernbank Science Center • DeKalb County School System ISSN 0742-6518

MY FROG BOOK

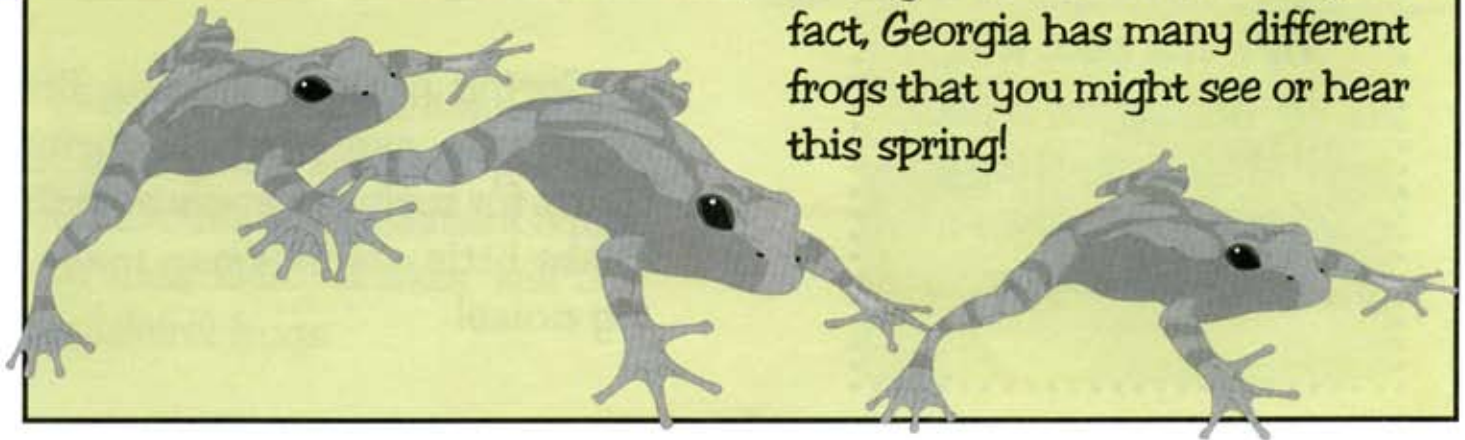
Draw a frog on the front of this book.
Look inside to learn one way to draw a frog.



NOISY NOISY FROGS!

There are many signs that spring is coming. Listen! Birds chirp. Rain splatters. Frogs peep.

Frogs peep? Yes! Spring Peepers are tiny frogs that begin to sing at the end of January. In fact, Georgia has many different frogs that you might see or hear this spring!



Life cycle of a frog



EGGS



TADPOLE

Frogs in Georgia come in all sizes.

MAKE A
POCKET
FROG BOOK.



1. Cut on the solid line.
2. Fold on the dashed lines.
3. Draw a frog on the cover.
4. Use the pocket frog book to identify a frog you see.

TIP: The best way to find frogs is to listen for them. Keep listening as you move closer.

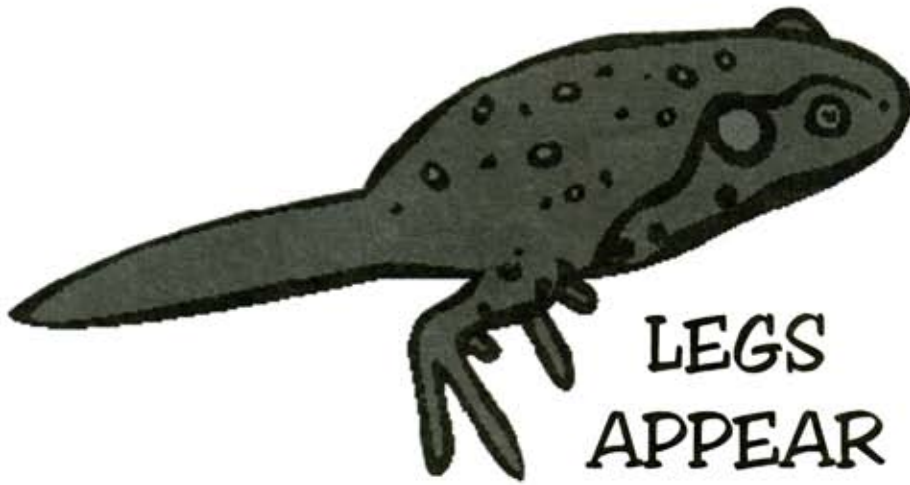
Spring Peeper

Color: tan, rust, brown or gray



Size: 0.75 - 1.5 inches Call: single high note peep

Spring peepers are the first frogs you can hear in spring. Listen for spring peepers at night. These little animals can make a big noise!



**LEGS
APPEAR**

They make many different sounds.

Upland Chorus Frog

Color: gray to brown



Size 0.75 - 1.5 inches Call: crreeek

Little Grass Frog

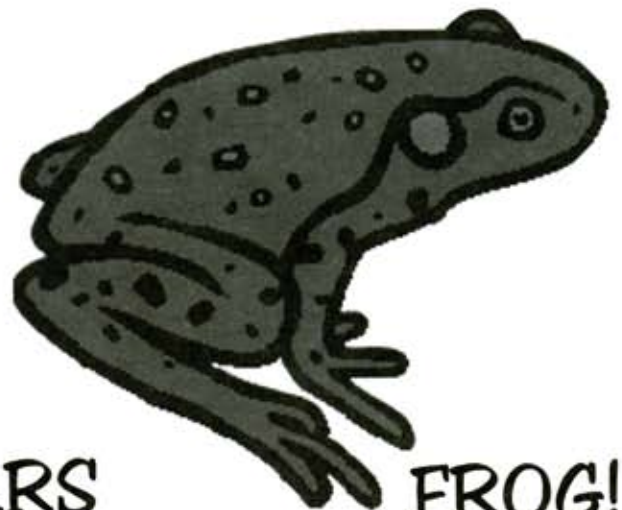
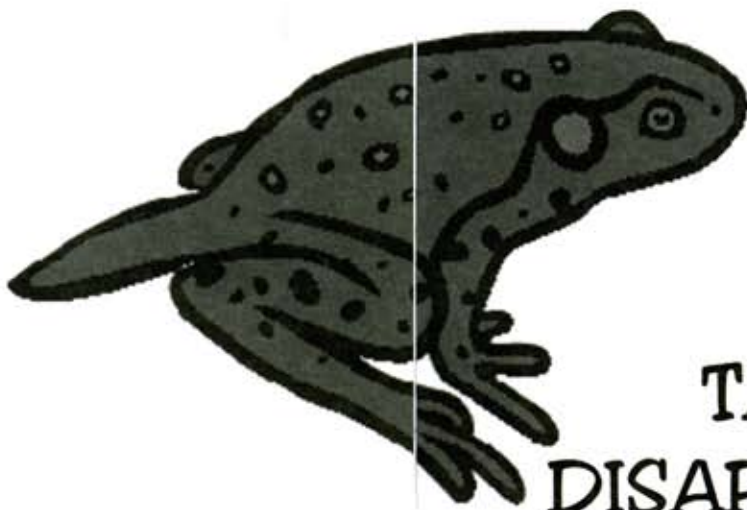
Color: tan to gray



Size: 0.5 - 0.75 inches Call: tinkling, "set-see"

These frogs are very hard to find. They are called chorus frogs because they sing together. Like all frogs, only the males sing.

Little grass frogs are the smallest frogs in Georgia. They are smaller than a quarter. These frogs live on the Georgia coast.



TAIL DISAPPEARS

FROG!

These are the frogs you are likely to hear or see in the ponds, streams, lakes and trees around your neighborhood.

Gray Tree Frog

Color: gray, green or brown



Size: 1.5 - 2.5 inches Call: telephone ring

Green Tree Frog

Color: bright green

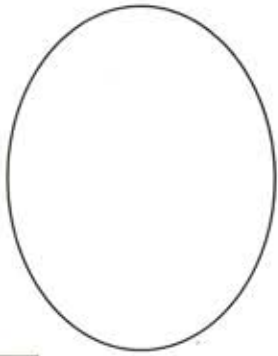


Size 1.25 - 2.5 inches Call: honking goose

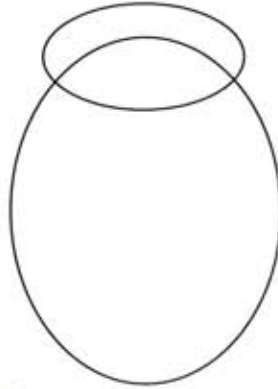
Tree frogs have special feet for climbing trees. Instead of just having webbed feet, they have toe pads.

These frogs are often bright green. When they get scared or cold, their color changes to dark, dark green. Tree frogs are most active at night.

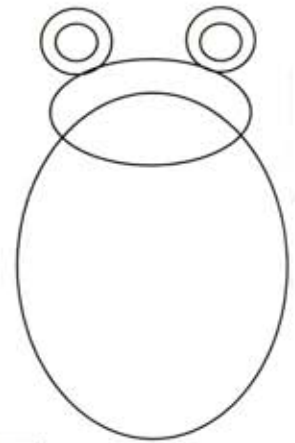
Follow these steps to learn one way to draw a frog.



1



2



3

Pickerel Frog



Color: tan
Belly - yellow to orange

Size: 1.5 - 3.5 inches Call: slow snoring

Southern Leopard Frog



Color: green to brown

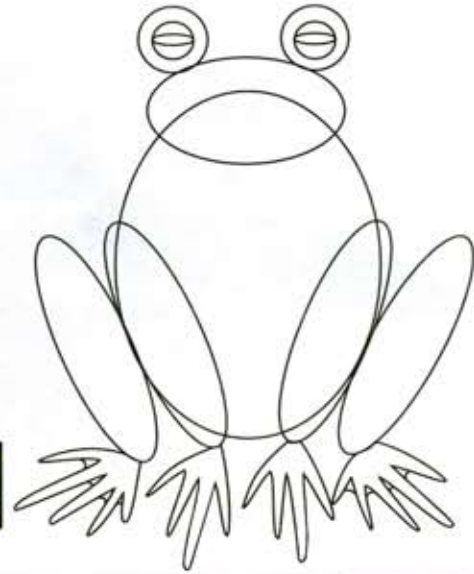
Size 2.0 - 5 inches Call: rubbing a wet balloon

Touching frogs or toads does not give you warts, but pickerel frogs do ooze an unpleasant liquid from their skin. Snakes will not eat pickerel frogs.

Southern leopard frogs are good jumpers. Like most frogs, the males are smaller than the females.



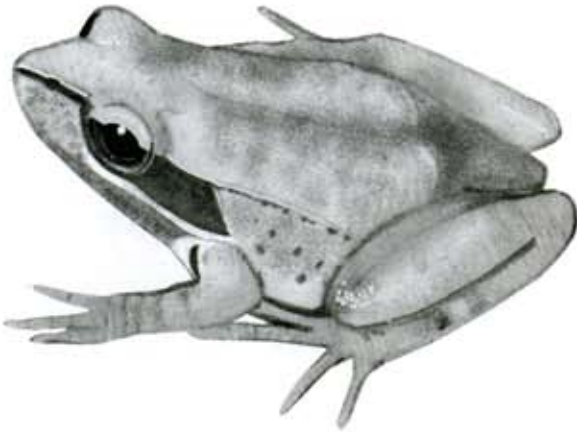
4



5

Wood Frog

Color: pink, tan or brown



Size 1.5 - 3.25 inches Call: ducklike clucking

Bullfrog

Color: green to yellow



Size 2.5 - 8 inches Call: deep, slow, loud "jurrum"

Wood frogs can freeze and not die. Scientists are studying how they do it.

These are Georgia's biggest frogs. They can be 8 inches long. Their tadpoles can be almost 7 inches long.